

Things you want to know!



about

THE

*L*USTRON HOME



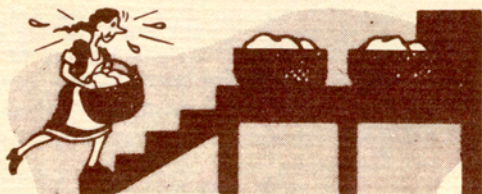


Price

Your dealer will announce the price of the erected home when the houses are ready for delivery. The price will include the foundation and the erection of the home. Site improvement and the extension of sewer, water, and other utilities are extra, varying as they do with each lot. Mass production and speedy erection make it possible to deliver the Lustron Home at a price never before available for quality houses in this class.

Colors

The colors for the Lustron Home have been chosen by leading designers and color experts. Interior colors are designed to make furnishing and decorating easy. Neutral shades permit the widest possible variation in choice of draperies, rugs, and individual decorating schemes. Permanent finishes cut down maintenance costs. Exterior colors are distinctive and lend a feeling of quality and permanence.

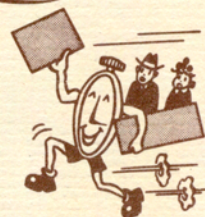


Basement

The Lustron Home is designed with maximum storage and service facilities on the first floor. A basement—the old necessary evil—is not needed. The furnace is located at the ceiling in the large utility room. The combination dishwasher-clotheswasher-sink in the kitchen brings your laundry upstairs for greater convenience. The washer spin-dries the clothes, and hooks are attached to the walls of the utility room to hang the clothesline. Seven large closets, many overhead cabinets, and the spacious utility room provide ample storage space without a basement.

Erection Time

The complete Lustron Home package is shipped from the factory to the builder-dealer, ready for speedy erection on the site by the dealer's specially trained crew.

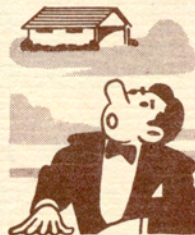


Picture Hanging

Pictures can be hung with screws set in the plastic sealing strips between the interior panels. You can change your mind, too! If you don't like the picture in one spot it's easy to remove the screw and put it in another place.

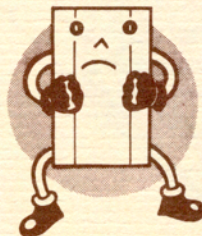
Garages

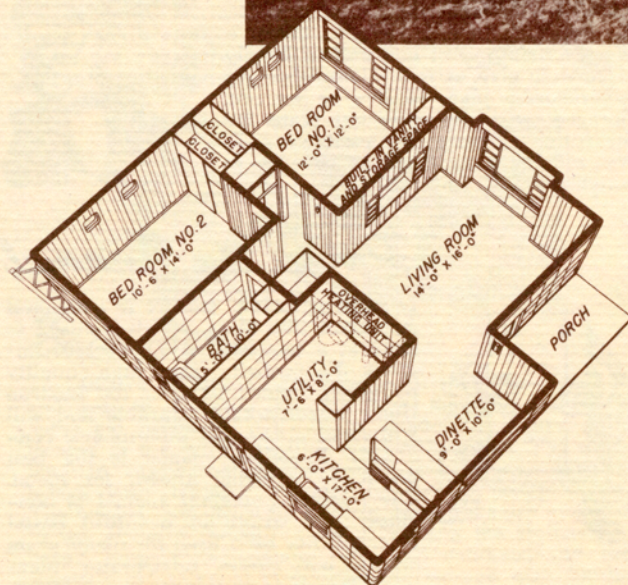
We are using all of our limited supply of steel to give as many house-hungry Americans a place to live as we can. Garages are included in our plans for the future but are not available now. We will have designs for garages to match the Lustron Home.



Porcelain Enamel

Lustron porcelain enamel is a mineral substance like glass, which is fused to steel at a temperature above 1300 degrees Fahrenheit. The high quality porcelain enamel used in the Lustron Home is remarkably durable and will withstand abuse and atmospheric conditions. Porcelain enamel is the best protective covering known for metal. The Lustron porcelain enamel is non-glossy and comes in beautiful pastel colors. It has been used for many years on the best stoves, refrigerator interiors, washing machines, store fronts, and service stations.





AN EXTERIOR VIEW OF THE LUSTRON HOME

Take a look at the floor plan of the Lustron Home. Note the five large rooms, plus the utility room. Look closely at the placement of the four picture windows. Check the many spacious cupboards and closets. There are more than 1000 square feet of floor space, making the home larger than the average five room house.

THE *LUSTRON* HOME

Building Codes



The Lustron Home can be built in almost any city or town in the United States. The Lustron building codes experts work in close cooperation with Lustron builder-dealers. Together they are approaching code problems in localities where new types of construction are opposed.

Other Models

At present, we are marketing only one model—the five room one-floor plan home that you have seen in national advertisements or on display. There are no provisions for adding rooms to this home. America needs housing and our purpose is to put a quality product on the market at the lowest possible cost to meet this demand. Future plans call for larger models.



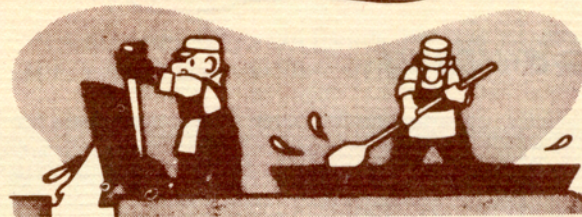
Financing



The usual sources of home financing, including FHA-insured and GI loans, are available. The Federal Housing Administration has issued its Engineering Bulletin covering construction of the Lustron Home. The dealer is prepared to assist the customer in arranging mortgage financing through the customary channels.

Fireplaces

Sorry, no fireplace! No provision has been made for fireplaces in the present model of the Lustron Home.



Foundation

You need a good foundation to have a good house. The Lustron concrete floor slab was designed with special attention given to insulation and moisture protection. Floors are covered with polished asphalt tile in colors chosen to harmonize with walls and furnishings.

Painting and Papering

Lustron Homes have walls of permanent washable porcelain enamel and will never need redecorating. If you damage a panel surface—and it takes extreme abuse to do so—it can be repaired or replaced.

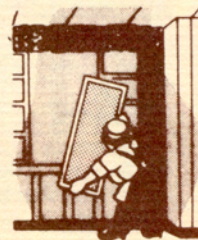


Utility Room

A spacious utility room houses the automatic water heater as well as the heating unit—both furnished with the house. The utility room provides ample space for activities such as ironing or sewing, and for miscellaneous storage and appliances.

Screens

Window screens are furnished with the house. If you want combination screen-storm doors, separate screen doors, and storm windows, they can be obtained from your dealer as accessories.



Sanitary

The all-steel construction makes the Lustron Home completely termiteproof, verminproof, and ratproof. It's also fireproof, decayproof, stainproof, salt-waterproof — let's say it's almost maintenance-proof.

Insulation

Fireproof insulating material is used throughout the Lustron Home. This provides adequate insulation for any climate, keeping you warm in winter and cooler in the summer.

Lightning

Imagine a self-contained lightning rod! That's what you have in the Lustron Home. Putting it technically, the house serves to dissipate the static electricity. The all-steel construction has no effect at all on radio reception or television.

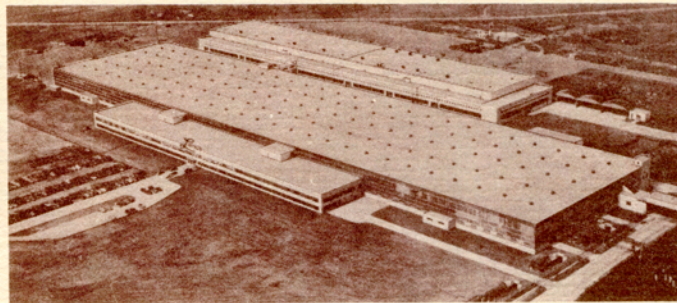
Roof

The lifetime roof is made of the same porcelain enameled steel used throughout the house. All outside parts, gutters, down drains, and walls are of permanent porcelain enameled steel.

Attic

There is no attic. This space is used for structural members, and for heating and insulating. This allows for greater living comfort.

THIS GIANT PLANT IN COLUMBUS, OHIO IS TOOLED UP FOR VOLUME PRODUCTION OF THE LUSTRON HOME



SUMMING IT UP

Now, let's list some of the features we've been telling you about.

- 1. LOW UPKEEP:** No painting or redecorating—just use soap and water to keep it clean! The combination of steel, noted for its strength and durability, and porcelain enamel, the best known preserver of metals, makes for permanency and saves on the usual year-to-year repair bills.
- 2. RADIANT PANEL HEATING:** This latest of heating systems maintains constant temperature throughout the home. The absence of air currents carrying dirt and soot makes the house easy to keep clean.
- 3. PICTURE FRAME WINDOWS:** Large picture windows in bedrooms, living room, and dining room provide excellent view and good lighting.
- 4. ONE-FLOOR PLAN:** The convenience of one-floor living—no stairs to climb. With the combination dishwasher-clotheswasher-sink, furnace and ample storage space on the first floor, you do not need a basement.
- 5. BUILT-IN FEATURES:** Every inch of space is utilized. Built-in dishwasher-clotheswasher-sink, bookcase and china cabinets, seven large closets, vanity in master bedroom, sliding doors, overhead storage cabinets, kitchen ventilating fan, and many other features are included. These quality features have never before been available in houses in this price class, and are made possible by Lustron's modern mass-production methods.