



Living History of Illinois and Chicago®

Living History of Illinois and Chicago® – Facebook Group.

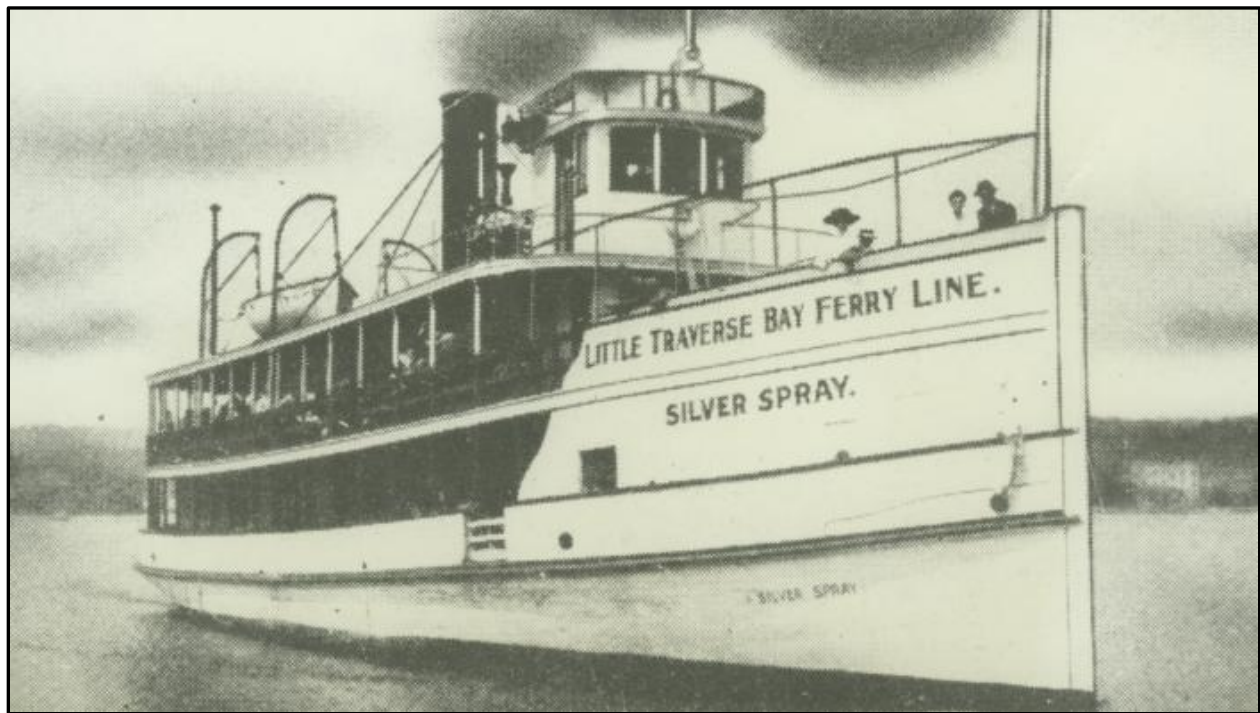
Digital Research Library of Illinois History®

Living History of Illinois Gazette - The Free Daily Illinois Newspaper.

Illinois History Store® – Vintage Illinois and Chicago logo products.

The ‘Silver Spray’ Shipwreck, Chicago, Illinois

In July of 1914 the Silver Spray set sail to pick up some university students and take them to Indiana to tour some steel mills. Unfortunately the trip never came to pass as the Silver Spray ran aground on Lake Michigan's [Morgan Shoal](#)[1], a massive underwater rock formation that was formed millions of years ago by glacial activity.



The Silver Spray

Once it was apparent that the ship was doomed, the captain and the crew decided to remain with their ship, not even halting the preparation of the evening's stew. The crew was rescued the next day, but attempts to salvage the ship only caused it to slam against the rocks, and the wooden steamship quickly broke in two. In addition, the boiler had been left on and the ship caught fire as it sank, making for quite the spectacle. Groups of spectators on shore began collecting the wooden debris as it floated in and burnt them in large bonfires. It must have been a delightful time.



Living History of Illinois and Chicago®

[Living History of Illinois and Chicago®](#) – Facebook Group.

[Digital Research Library of Illinois History®](#)

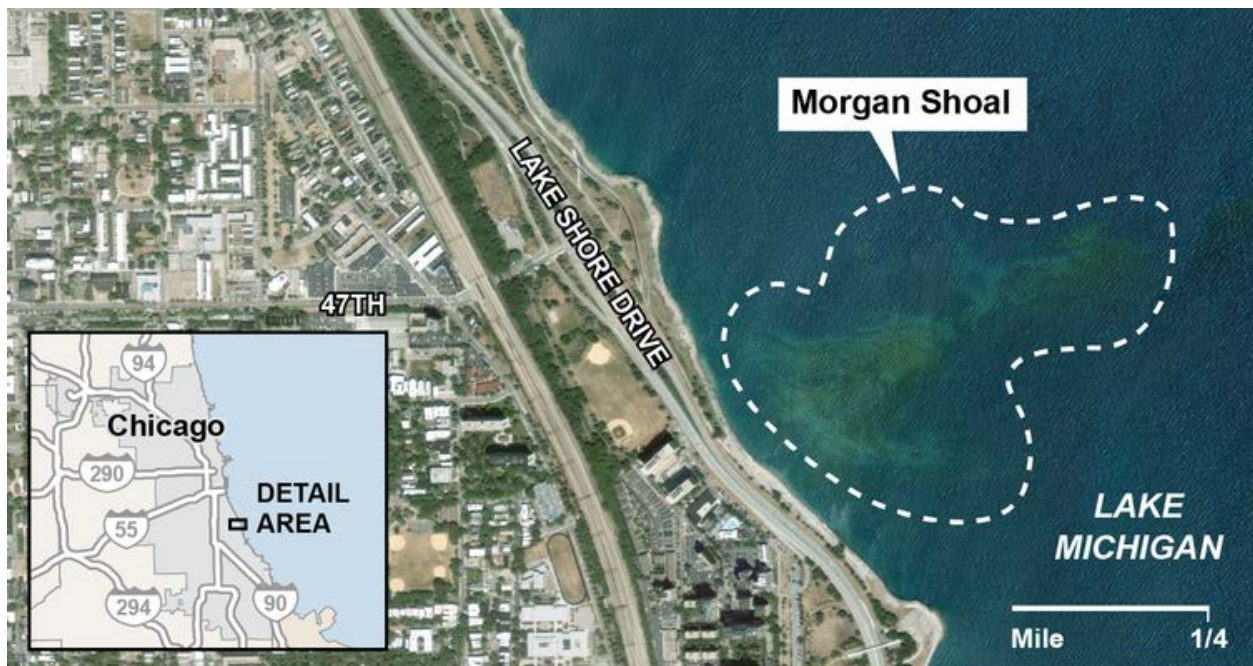
[Living History of Illinois Gazette](#) - The Free Daily Illinois Newspaper.

[Illinois History Store®](#) – Vintage Illinois and Chicago logo products.

Today, over a century later, the remains of the Silver Spray can still be seen peeking out of the waters of Lake Michigan. While most of the wooden structure is long since gone, the ship's metal boiler still juts out of the water. The Silver Spray is the closest shipwreck to the coast of Chicago and is thus a popular diving spot, along with Morgan Shoals in general. Some swimmers even paddle out to the wreck and sunbathe on its exposed angle. For better or worse, the Silver Spray seems to be bringing more joy to people in death than it ever did in life.



[1] Morgan Shoal is a million square foot dolomite shelf left over from glacial action millions of years ago near what would eventually be Lake Shore Drive at 49th Street. The wave action at this unique spot along the shoreline creates the city's only pebble beach and a tricky navigational spot for boats.



Google Earth satellite image

@ChiTribGraphics